



Spring Grove, London, W4 3NH

Guide Price £899,950

**WHITMAN & CO.**

SALES · LETTINGS · COMMERCIAL

- Private 38' south facing garden
- Sunny roof terrace
- Beautifully presented
- Close to the river
- Fantastic transport links
- No chain

Tenure - Freehold  
Local Authority - Hounslow  
Council Tax - Band F

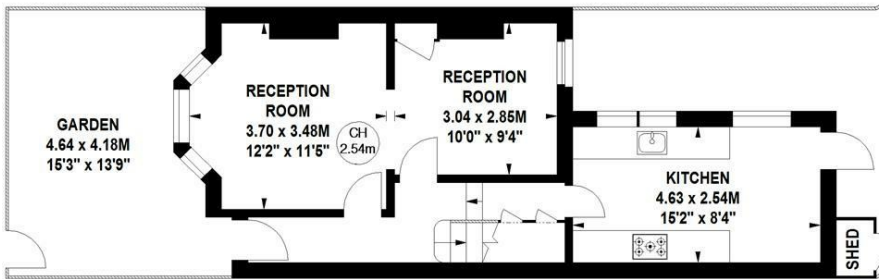
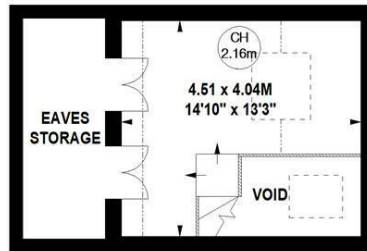
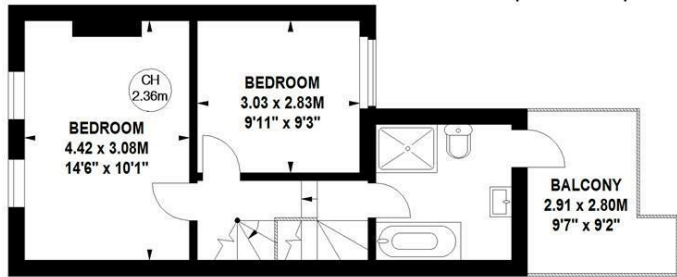
## THE PROPERTY

A well-presented Victorian cottage, ideally located in the historic Strand on the Green, featuring a private 38-ft south-facing garden and a roof terrace. The property includes two double bedrooms, a staircase leading to a loft room, a luxury bathroom, a double reception room, and a fully integrated kitchen, all complemented by a host of original features. Situated on a sought-after residential street, it offers close proximity to Kew Bridge Station, local bus routes, Gunnersbury Station, and an array of local shops, bars, and restaurants. No chain.

### Spring Grove, W4

Approximate gross internal area  
102.93 sq m / 1108 sq ft  
(Including Eaves Storage & Void)  
Approximate eaves storage area  
6.41 sq m / 69 sq ft

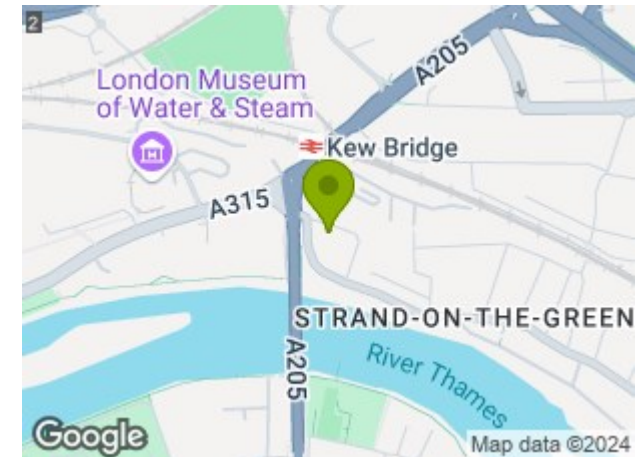
Key :  
CH - Ceiling Height



GARDEN  
11.45 x 3.44M  
37'7" x 11'3"

Not to scale, for guidance only and must not be relied upon as a statement of fact.  
All measurements and areas are approximate only

## SITUATION



5-7 Turnham Green Terrace, Chiswick, London, W4 1RG

Tel 020 8747 8800

E-mail [sales@whitmanandco.com](mailto:sales@whitmanandco.com)

Website [www.whitmanandco.com](http://www.whitmanandco.com)



MISREPRESENTATION ACT 1967

Whitman & Co. for themselves and for the vendors give notice that these particulars do not constitute any part of, an offer of contract. All statements contained in these particulars are made without responsibility on the part of Whitman & Co. or the vendor. None of the statements contained in these particulars is to be relied upon as statements or representations of facts. Any intending purchaser must satisfy himself by inspection or otherwise as to the correctness of each of the statements contained in these particulars. The vendor does not make or give, and neither Whitman & Co. or any person in their employment has any authority to make or give, any representation or warranty whatever in relation to the property.